



"40.6959°N, 73.9956°W"



"40.6959°N, 73.9956°W"



"40.6959°N, 73.9956°W"

REACHING

for

Luminous Light

BORDER CROSSING

DEPARTURES



Brooklyn Law School

ESTABLISHED 1901

OMINOUS SCENES IN NATURE



"43.1939°N, 71.5724°W"



"43.1939°N, 71.5724°W"

HAD THE POLICE KNOWN ABOUT THE BARBED wire

ON THE FRONTIER OF DISASTER. PREDOMINANTLY

a dream

REVELATORY



DOCUMENTARIES



"43.1939°N, 71.5724°W"



"41.8240°N, 71.4128°W"



"41.8240°N, 71.428°W"

THE STATUE OF LIBERTY



"41.8240°N, 71.4128°W"



"40.6892°N, 74.0445°W"

MAY 2019
WHAT'S NEWS.

A DIGITIZED SOCIETY

JOURNAL.

Equality
in the
Digital Age

1 0 6

AN ISSUE

YOU CAN'T FORGET

BEYOND

all generations



"40.6892°N, 74.0445°W"



"40.6892°N, 74.0445°W"

CHINATOWN



"65 BAYARD STREET 10013"

AT HOME
IN THE
WORLD

NEW YORK

A NEW

PLACE



ITINERARY AT A GLANCE



"40.7158°N , 73.9970°W"



"LIGHTS"



NEWS

found

IN

HUNGRY HEARTS

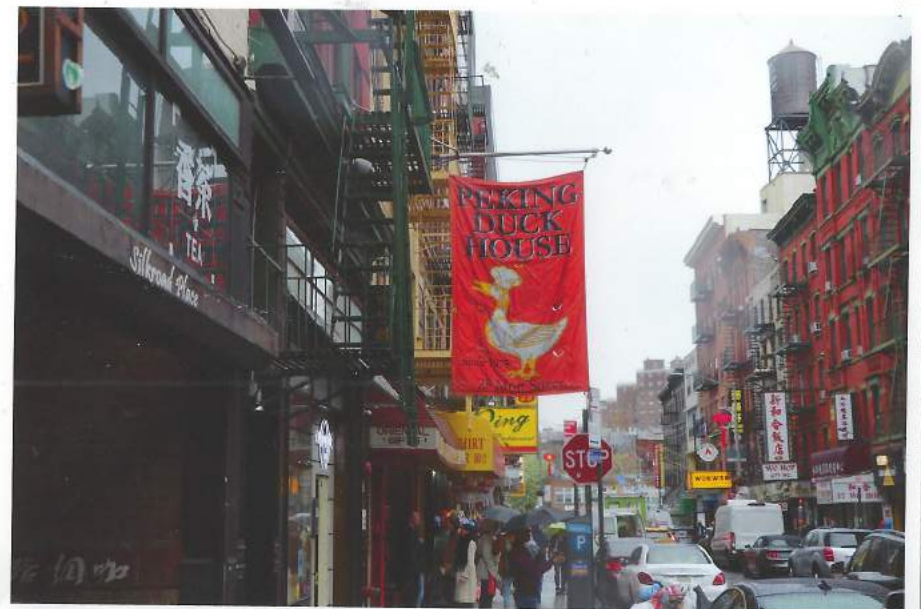


"40.715°N, 73.9970°W"

THE

artists

4



"A RAINY STREET"



"COLD HORIZONS"

NEW YORK CITY

Fresh and Fabled Faces

behind the cover

"All of these plays wrap brutal honesty with giddy humor; all of them eschew self-seriousness and easy didacticism and yet are deadly serious in intent. They're playing for keeps instead of playing it safe."

NEW YORK MAGAZINE

IDEAS!



"SWEET COFFEE"



"98 BAYARD"



Practice Advisories

Guidance on developments in "crim-imm" law



Charts + Checklists

Up-to-date, easy-to-use information for attorneys



"STRINGS OF LANTERNS"



"SWARMS OF BRIGHT SIGNS"

THE NEW YORKER



"MOTT STREET"



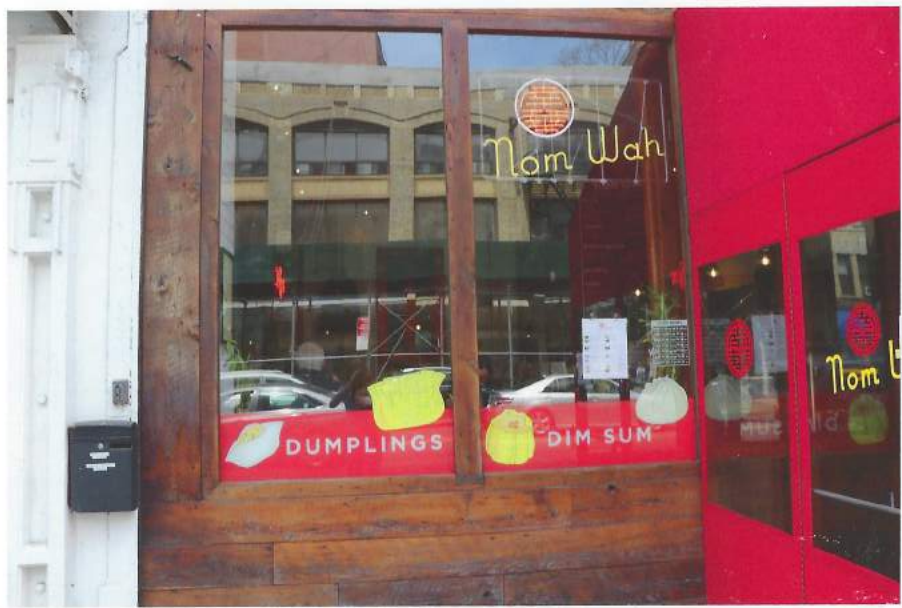
"SILENT MELODY"



"BLUE"



"UNINTERRUPTED CHAOS"



"NOM WAH TEA PARLOR"



"AROUND"



"LOWER 10 MANHATTAN"



"ECHOES THROUGH BUILDINGS"



"MOVEMENT"



"MULTIRACIAL"



"A SKY COVERED IN BILLBOARDS"



"A PEACEFUL WORLD"



"A CANOPY OF BRANCHES"



"AFTER THE RAIN"



GilderLehrman.org/Constitution-Play

Call

THE
NEW YORKER
TODAY

these pages





"CONCRETE YOUTH"

HATE AND LOVE

remains

with



YOU

n

LIFE

THE LOWER EAST SIDE



"10002 TO 10009"



"ORCHARD STREET"

the bad guys

THE TALK OF THE TOWN

Get into

wealth

A PIECE OF A MUCH LARGER
MACHINE AND OPPRESSIVE SYSTEMS



"WILD PIGMENT"



"LUDLOW STREET"



"MARKED BRICK"

MEND



"KATZ'S DELICATESSEN"

DARKNESS

newyorker.com/go/today



THE GILDER LEHRMAN
INSTITUTE of AMERICAN HISTORY
GilderLehrman.org

What the
Constitution
Means to Me

RISING

MAGIC

individual *S*

**FOR IMMEDIATE
RELEASE**



"SHORT BUILDINGS"

little



BIOGRAPHIES

AND

BOOKS

BREAKING

bread

WITH



STRANGERS



"A PLACE OF SANCTUARY"

HOSTING FRIENDS



"THE TENEMENT MUSEUM"

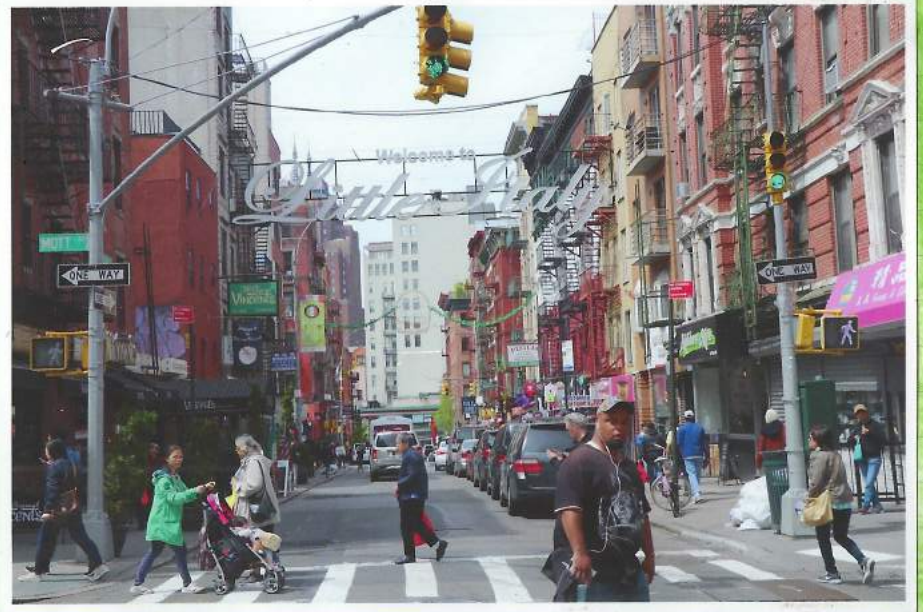


"STAINED GLASS WINDOWS"

THE JOURNEY



"KATZ'S DELICATESSEN"
LITTLE ITALY



"40.7191° N, 73.9973° W"

moves you

NO ARTIFICIAL

WELCOME



"WALKING THROUGH CROWDS"

Next

TO

DARKNESS

IS

LIGHT



"COLORFUL ESCAPES"

BRIGHT

&

GOLDEN



"WELCOMED INTO AMBIGUITY"



"FATALISM"

INTENSE

Intake

FORMS THAT

STRIKE You

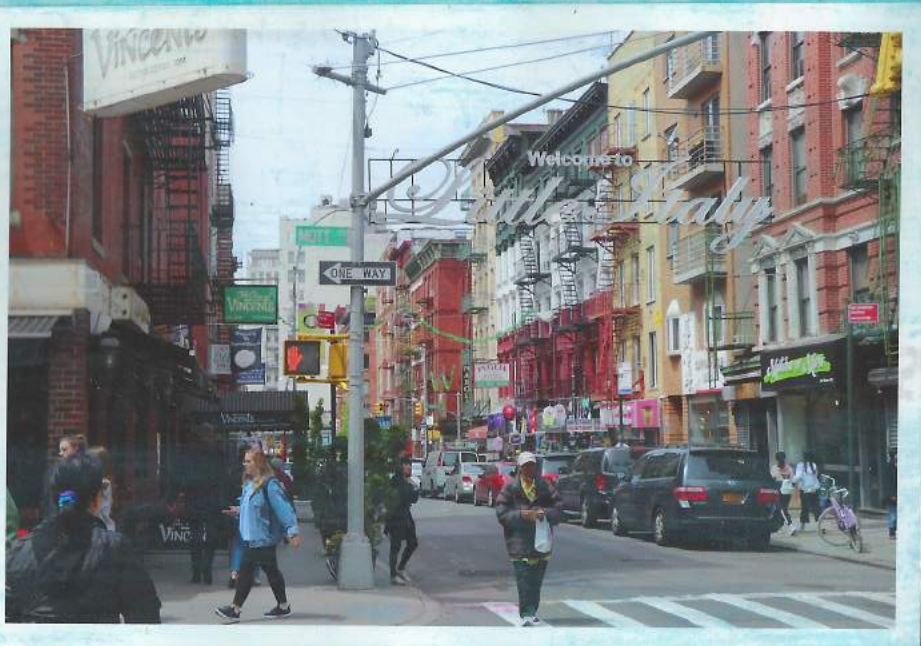
DEEP

i **N**

Your

CORE

THE FIGHT IS ON



A

Need

SUPPORT

for

social

solution

2019

change

What

DOES

IT

mean

to

be

A

CITIZEN ?

what

DOES

IT

MEAN

TO

BE

AN

AMERICAN ?

FIND

News

RECONCILING
WITH ONE'S

NATIONAL IDENTITY

RECKONING WITH

SOCIETAL

SYSTEMS



"CENTRE MARKET"



"TRAFFIC LIGHTS"

A BACKGROUND ON IMMIGRANT NEIGHBORHOODS AND HISTORIC LANDMARKS IN NEW YORK CITY

THE STATUE OF LIBERTY AND ELLIS ISLAND

- FROM ITS DEDICATION, THE STATUE OF LIBERTY HAS BEEN AN ENIGMATIC MONUMENT, A POWERFUL SYMBOL OF THE TENSIONS BETWEEN NATIONAL INDEPENDENCE AND UNIVERSAL HUMAN RIGHTS. IN LATE OCTOBER OF 1886, THE INTRODUCTION OF THIS MONUMENT OCCURED FOLLOWING A FRENCH DELEGATION'S ARRIVAL IN NEW YORK. IT WAS DESIGNED BY AUGUSTE BARTHOLDI (1834-1904) AS A GIFT AND ICONIC FIGURE OF AMERICAN FREEDOM STANDING OVER NEW YORK HARBOR. WITHIN THE SHADOW OF THE STATUE OF LIBERTY IS ELLIS ISLAND, A PORTAL THROUGH WHICH OVER 12 MILLION IMMIGRANTS ENTERED FROM 1892 TO 1904, BUT ITS CURRENT STATUS IS AS A NATIONAL MONUMENT.

[HTTPS://PLACESJOURNAL.ORG/ARTICLE/SENTINEL—THE STATUE OF LIBERTY/?GCLID=CJOKCQJWITPNBRCQJWITPNBRCQARISAA5N841ZQ92M7MDPDB5VNQTR0KM444PMQ552](https://placesjournal.org/article/sentinel—the-statue-of-liberty/?gclid=CJOKCQJWITPNBRCQJWITPNBRCQARISAA5N841ZQ92M7MDPDB5VNQTR0KM444PMQ552)

CHINATOWN AND LITTLE ITALY

- NEW YORK'S CHINATOWN CAME INTO BEING IN 1870 AS THE CHINESE POPULATION ROSE FROM APPROXIMATE 150 IN 1859 TO OVER 2,000 BY THE 1870s WITH MANY IMMIGRANTS BEING DRIVEN OUT OF THE WEST DUE TO A VIOLENT, ANTI-CHINESE MOVEMENT FUELED BY WHITE ANXIETY OVER EMPLOYMENT. THIS GROUP OF IMMIGRANTS, BARRED FROM CITIZENSHIP AND ITS PROTECTIONS CARVED OUT CHINATOWN IN

THE LATE 1800s AS A SANCTUARY FOR SURVIVAL.

AFTER ITS ESTABLISHMENT, WHITE AMERICANS EXOTICIZED IT, CONTRIBUTING TO AN INFLATION OF TOURISM ANOTHER COMMUNITY WHICH NEIGHBORS CHINATOWN IS LITTLE ITALY IN LOWER MANHATTAN, ONCE KNOWN FOR ITS LARGE POPULATION OF ITALIAN-AMERICANS DURING THE LATE 1800s INTRODUCING DIFFERENT CUSTOMS, FOOD, AND LANGUAGE WHOSE HERITAGE REMAINS EMBEDDED IN THE STREETS. BOTH ARE CLOSE IN PROXIMITY, YET VARY IN IDENTITY.

THE LOWER EAST SIDE AND TENEMENT MUSEUM

- THE LOWER EAST SIDE, OR LES, IS A NEIGHBORHOOD IN THE SOUTHEAST PART OF MANHATTAN LOCATED BETWEEN THE BOWERY, EAST RIVER, CANAL, AND HOUSTON STREET. IT IS CHARACTERISTICALLY KNOWN AS AN IMMIGRANT, WORKING CLASS NEIGHBORHOOD WHICH UNDERWENT RAPID GENTRIFICATION IN THE MID-2000s. THE MAJORITY OF IMMIGRANTS WHO ARRIVED IN NEW YORK CITY FROM THE LATE 19TH AND EARLY 20TH CENTURIES SETTLED IN UNKempt HOMOGENEOUS TENEMENTS. ON THE LES, HOME TO PEOPLE OF MANY IDENTITIES, THE TENEMENT MUSEUM IS A REMINDER OF THE CONTEXTUAL HISTORY OF OUR COUNTRY AND ALLOTS ONE TIME TO EXPLORE INFORMATION ABOUT THIS TOPIC WHICH BRINGS IT TO LIGHT AND HUMANIZES IT. THAT "OUR NATIONAL IDENTITY HAS BEEN SHAPED BY THE ENERGY, OPTIMISM, AND AMBITIOUS BELONGING TO EACH SUCCESSIVE GENERATION OF IMMIGRANTS."

EXPLORING



A



Fragile Land

CHALLENGING



OPPRESSIVE

SYSTEMS

& COMMUNITY

ENGAGEMENT

THE

Constitution

VOICES

POWERED BY ANY LIGHT

ARTIST

journalist

OF

POWER

ENGAGEMENT

NEW

we strengthened our compliance procedures and controls around hiring and reinforced the high standards of conduct expected of our people," the representative said.

well," Dr. Zervas said. Dr. Zervas, together with Michael Luca, associate professor at Harvard Business School, has published research on the same day at a mailing exchange rate. The commission said individuals at the five banks in a consumer team and cloud infrastructure companies such as Amazon.com Inc. and Google.

personal Cryptocurrency market. Yet artificial-intelligence applications propelled the company in recent years, but sales last year as cryptocurrency prices fell sharply.

g the quarter ended April 28, Nvidia again networking with other outside companies, it said.

HSBC Holdings plc said, the possible collusion among global banks to manipulate U.S. dollar-denominated supra-sovereign bonds, so-called to

By MEGH MAIDENBERG

Baidu Inc. warned of fallout from the slowing Chinese economy and swung to a loss in the latest period as spending rose.

The Beijing-based internet search company said its online market share fell to a range of 30% to 40% in the first quarter, down from 40% to 50% in the same period last year.

Overall, Baidu reported revenue of 24.12 billion yuan (\$3.8 billion) in the first quarter, slightly less than what analysts expected, according to Refinitiv.

But in line with its prior forecasts, Baidu's operating profit jumped 5% to 25.06 billion yuan (\$3.77 billion) in the first quarter.

Total operating profit for the first quarter was 25.06 billion yuan, or 3.77 billion dollars, compared with 24.12 billion yuan, or 3.5 billion dollars, in the same period last year.

COLLECTIONS

Start the conversation

London. The chat rooms, with colorful names such as "Three Way Banana Split" and "Semi Grumpy Old Men," were kept open on the traders' screens all day, and they would post regular updates on their trading activities, the commission said.

Online chat rooms, in which change trading markets that first came to light in 2013 and made the total tab paid by banks to more than \$11 billion.

tions in the U.S. commission said whether and when to "The commission is pursuing of antage.

cedures conducted in the trading market," it said.

HSBC Holdings plc said, the possible collusion among global banks to manipulate U.S. dollar-denominated supra-sovereign bonds, so-called to

my health plan based on unique needs," the representative said.

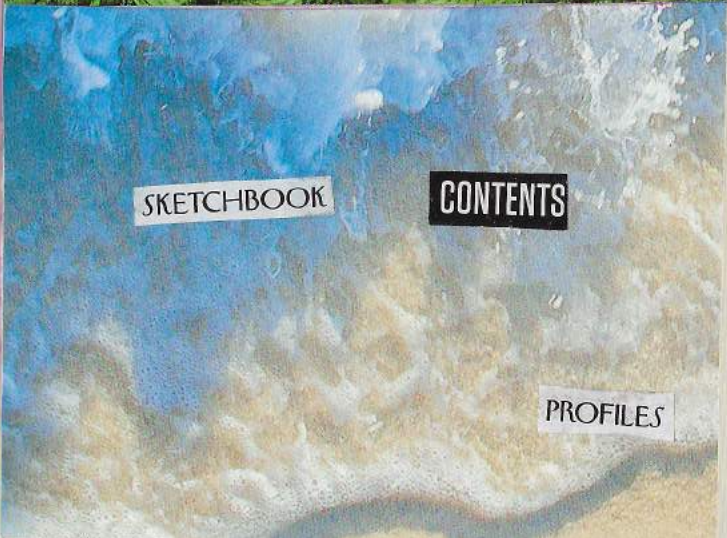
same man's photo also online as the face for companies' products and as such as men's skin, Botox for men and women.

Dr. Zervas, together with Michael Luca, associate professor at Harvard Business School, has published research on the same day at a mailing exchange rate. The commission said individuals at the five banks in a consumer team and cloud infrastructure companies such as Amazon.com Inc. and Google.

personal Cryptocurrency market. Yet artificial-intelligence applications propelled the company in recent years, but sales last year as cryptocurrency prices fell sharply.

g the quarter ended April 28, Nvidia again networking with other outside companies, it said.

HSBC Holdings plc said, the possible collusion among global banks to manipulate U.S. dollar-denominated supra-sovereign bonds, so-called to

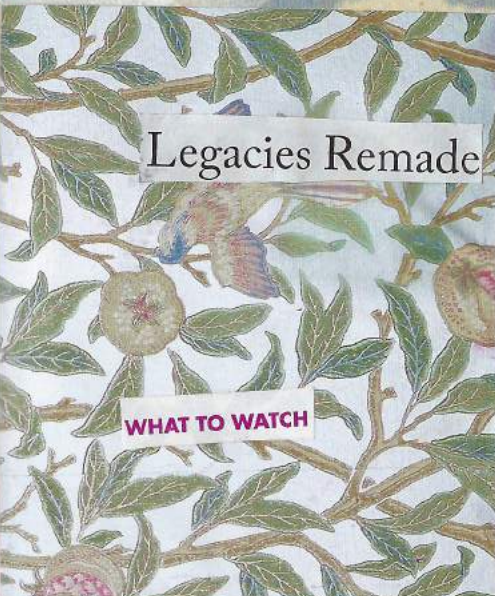


SKETCHBOOK

CONTENTS

PROFILES

UNDERSTANDING
AND
REMEDYING A
HUMANITARIAN
CRISIS
WHICH
CONCERNS US
ALL



Legacies Remade

WHAT TO WATCH

... we like the reflecti
... explains in her book,
... ing personal and pr
... ously left with the it
... another entails shopping for
... a gesture that seemed romantic at t
... but in hindsight was an indicator of controlling behavior
... But there are empowering moments as well, such as late

NOT ALRIGHT

All moments



EVERY

ISSUE

This

CHALLENGING

MOVEMENT

WHICH PLACES

DREAM

OF



THE

AND

NAMELESSNESS

ENGAGEMENT

OF

Home

ARTIST STATEMENT

THE PREVIOUS PORTRAITS AND MIXED MEDIA
PIECES REPRESENT IMMIGRANT COMMUNITIES
AND HOW THEY FUNCTION WITHIN OUR
SOCIETY AS AN IRREPLACABLE MECHANISM
MAKING POSITIVE CONTRIBUTIONS. THEY ARE
A CULMINATION OF INTERVIEWS I CONDUCTED,
CRITICAL REFLECTIONS, PERSONAL ANECDOTES AND
THOUGHTS OVER THE COURSE OF SENIOR
PROJECT THROUGH AN ARTISTIC LENS. IT IS
COMPRISED OF IMAGES TAKEN ON BOTH A DIGITAL
AND FILM CAMERA ALONG WITH EXCERPTS
FROM MAGAZINES AND ARTICLES. MY GOAL WAS
TO REPRESENT MY EXPERIENCE AND ASPECTS
OF THIS HUMANITARIAN CRISIS IN A
DIFFERENT MEDIUM.

LOOKING INTO THE FUTURE AND EXPLORING
SOLUTIONS OR HOW TO REMEDY THIS GLOBAL
TOPIC, WE SHOULD BE DEDICATED TOWARD
MAKING THE PATH TO CITIZENSHIP MORE
OBTAINABLE AS THERE HAS BEEN A SEVERE
BACKLOG ON SUCH ALONG WITH A HIGHER
LEVEL OF LEGAL REPRESENTATION AND ACCESS TO
LEGAL DEFENSE TOOLS. THERE MUST ALSO BE AN
INCREASED LEVEL OF SUPPORT FOR IMMIGRANTS
AND THEIR FAMILIES AS THEY BECOME ACCUMATED
TO A NEW PLACE.

AND SO

OUR VOICES WILL NOTDISSIPATE INTO THE WIND,BUT THEY WILL

ECHO

MATERIALIZING WITH THE STRENGTH OF

A RAGING FIRE

AND CARRY THE MESSAGE

LIKE A PROCESSION OF DREAMERS

TO REMAGINE

OUR WORLD



AS ONE WHERE WE ARE ALL

WELCOME AND SAFE. ONE WHERE WE ARE ALLOWED

TO BASK IN ITS PEACEFULNESS,

SWADDLED LIKE NEW BORN BABIES AND

LAID TO REST IN THE PROTECTION OF A PLACE

CONSIDERED HOME.

T
P
A
S
M
A
CR
TH
PR
CO
AN
FR
TO
OF
DIE

LO
SO
TO
MA
OB
BA
LEV
LE
IN
AND
TO
PK

THE FINAL PAGE OF A PERPETUALLY
UNFINISHED STORY

COMPLETED

